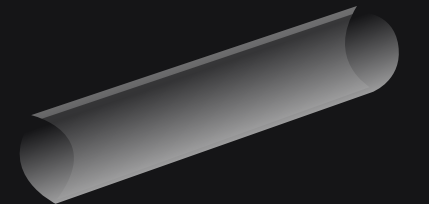


CrystalFlex

LED Flexible Transparent Film Display



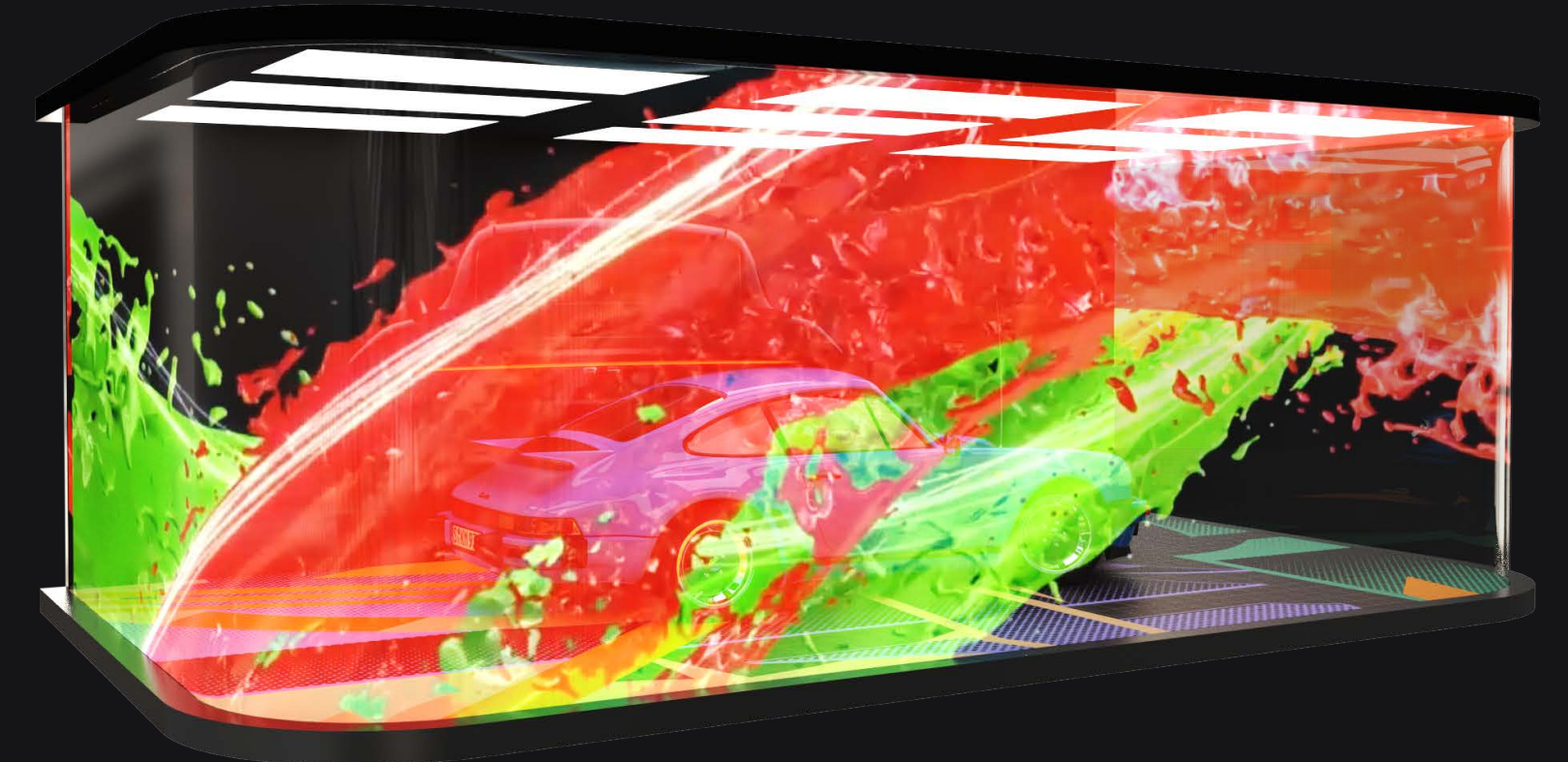
Thickness: **2mm**



Weight: **1.3KG**

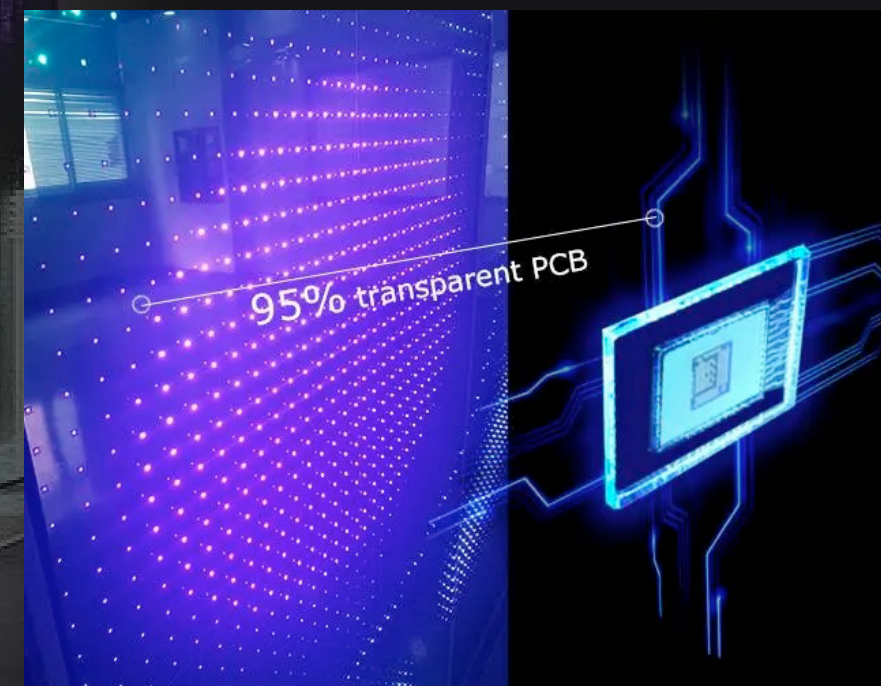


Module size:
1000mm*400mm



Light and thin
as thin as 2mm,
as light as 5kg/m²

No steel structure is required, just paste the film screen tightly and connect the power cable and signal cable

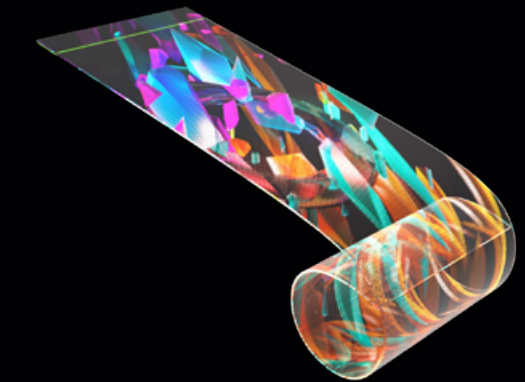


Invisible PCB technology

Thanks to the invisible PCB advanced technology, the transparency rating of film is up to 95%, you even can not see the PCB wires inside of film, when the film LED screen is turned off, it is same like a window glass.

Invisible screen

When inactive, it seamlessly disappears from view; however, it radiates vivid, compelling charm once activated

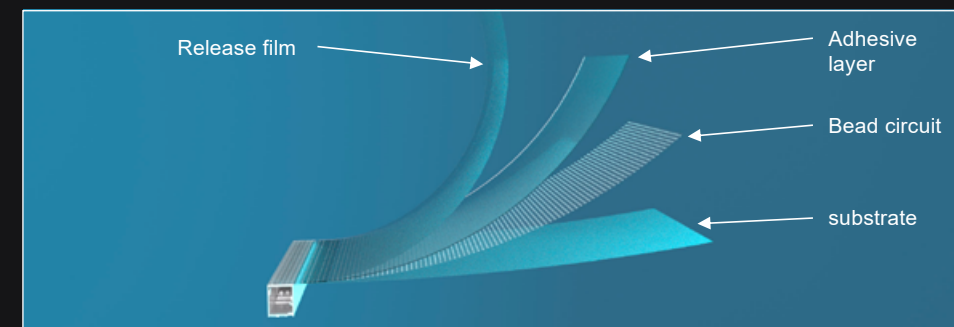


Flexibility

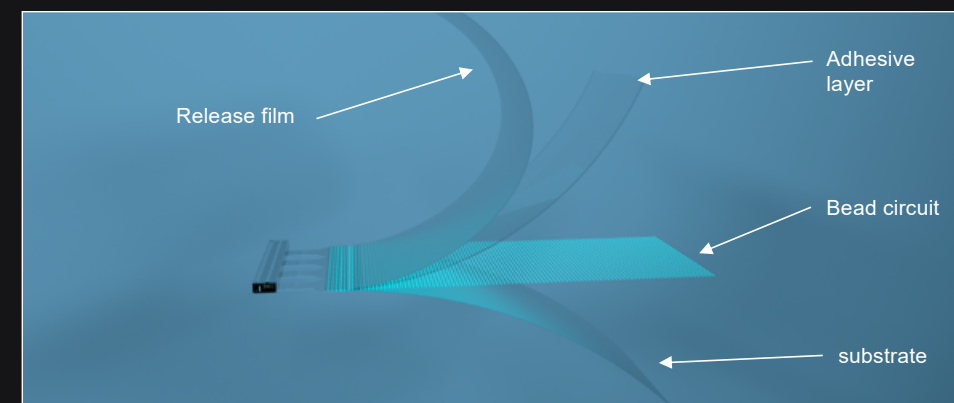
Break through the routine and extend infinitely



Hard connection

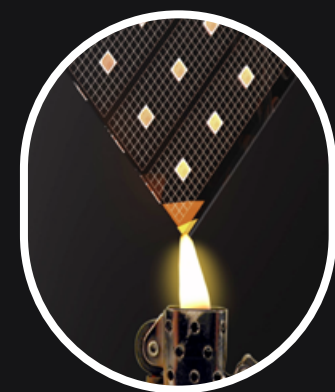
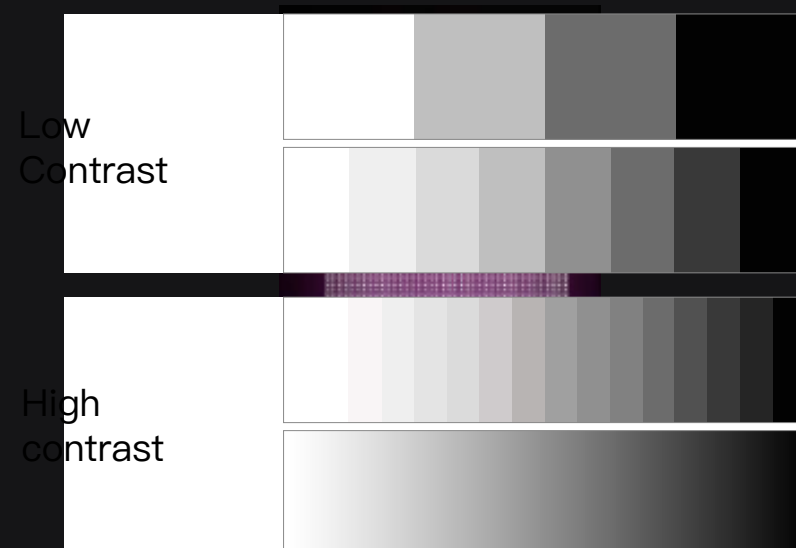


Soft ribbon cable connection



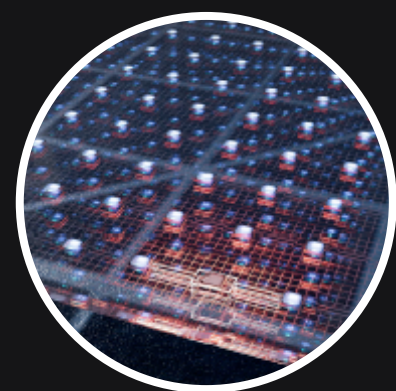
High gray scale display (true 16bit)

RGB channel adopts 32-level current linear regulation, and maintains true 16-bit grayscale display under any current, which is applicable to the consistency of indoor, semi-outdoor and outdoor current requirements;



Flame retardant

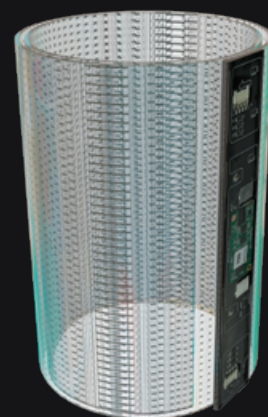
flame retardant grade V1



Breakpoint continuation

UV resistance

5~10 years can ensure no yellowing



Flexible

The panel can be rolled up into a column

Model	P8
Module size (mm)	1000*400
LED light	1515
Pixel composition	R1G1B1
Pixel spacing (mm)	8*8
Module pixel	125*50=6250
Pixel/m ²	16500
Brightness	2000/4000
Permeability	92%
Angle of view ^o	160
Input voltage	AC110-240V50/60Hz
Peak power	600w/m ²
Average power	200w/m ²
Work environment	Temperature -20~55 Humidity 10-90%
Weight	1.3kg
Thickness	2mm
Drive mode	static state
Control system	Nova/Colorlight
Typical value of life	
Grayscale level	
Refresh rate	

